

### Special Holedall Stems

Size	Material	Type	Part #
4"	carbon steel	NPT	TM64-42
	carbon steel		TML64-42
6"	carbon steel	NPT	TM96-42
	316 stainless		TMR96-42
	carbon steel		TML96-42
	unplated carbon steel	beveled	TP96-42
	316 stainless		TPR96-42
	carbon steel	grooved	TGL96-42
	carbon steel		TG96-42
8"	carbon steel	NPT	TM128-42
	unplated carbon steel	beveled	TP128-42
	carbon steel	grooved	TG128-42

NOTE: Use with external swage ferrules on page 591



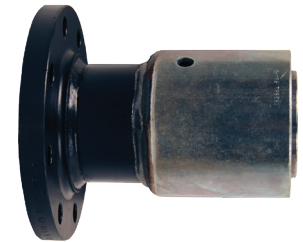
### External Swage Flange Assemblies

#### Features

- 150# ASA flange drilling available with carbon steel stem, flange, and ferrule, or with 316 stainless steel stem and flange and carbon steel ferrule
- Available in other sizes; consult Dixon®

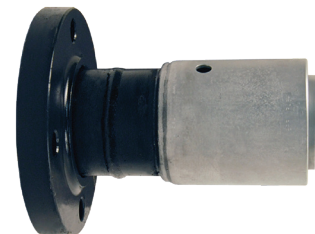
#### Fixed Flange

Size	Hose O.D.		Carbon Steel Part #	Stainless Steel Part #
	From	To		
2"	2-28/64"	2-40/64"	32P1SO15	R32P1SOR15
	2-41/64"	2-48/64"	32P2SO15	R32P2SOR15
	2-49/64"	2-56/64"	32P3SO15	R32P3SOR15
3"	3-30/64"	3-40/64"	48P1SO15	R48P1SOR15
	3-41/64"	3-48/64"	48P2SO15	R48P2SOR15
	3-49/64"	3-56/64"	48P3SO15	R48P3SOR15
4"	4-40/64"	4-44/64"	64P1SO15	R64P1SOR15
	4-45/64"	4-52/64"	64P2SO15	R64P2SOR15
	4-53/64"	4-60/64"	64P3SO15	R64P3SOR15
6"	7"	7-4/64"	96P1SO15	---
	7-5/64"	7-12/64"	96P2SO15	---
	7-13/64"	7-20/64"	96P3SO15	---
8"	9-20/64"	9-24/64"	128P1SO15	---



#### Floating Flange

Size	Hose O.D.		Carbon Steel Part #	Stainless Steel Part #
	From	To		
2"	2-28/64"	2-40/64"	32P1LJ15	R32P1LJR15
	2-41/64"	2-48/64"	32P2LJ15	R32P2LJR15
	2-49/64"	2-56/64"	32P3LJ15	R32P3LJR15
3"	3-30/64"	3-40/64"	48P1LJ15	R48P1LJR15
	3-41/64"	3-48/64"	48P2LJ15	R48P2LJR15
	3-49/64"	3-56/64"	48P3LJ15	R48P3LJR15
4"	4-40/64"	4-44/64"	64P1LJ15	R64P1LJR15
	4-45/64"	4-52/64"	64P2LJ15	R64P2LJR15
	4-53/64"	4-60/64"	64P3LJ15	R64P3LJR15
6"	7"	7-4/64"	96P1LJ15	---
	7-5/64"	7-12/64"	96P2LJ15	---
	7-13/64"	7-20/64"	96P3LJ15	---
8"	9-20/64"	9-24/64"	128P1LJ15	---



NOTE: For flange dimensions, diagrams and additional information, please reference [dixonvalve.com](http://dixonvalve.com).